



MTTC

INTERNATIONAL LLC



CIVIL QA/QC & NDT CIVIL QS INTERIOR DESIGNING

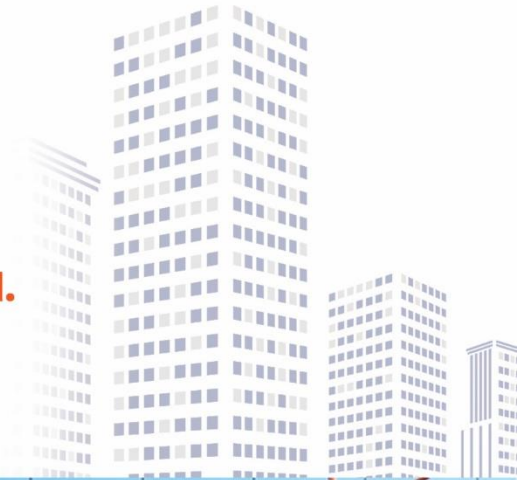
**SITE VISIT IN ON GOING CONSTRUCTION SITES
ONE MONTH INTERNSHIP IN WORK SITES
100% PLACEMENT SUPPORT**



WHY CHOOSE MTTC ?



MTTC is one of the best institute in India. we have highly qualified faculty and modern facilities for providing better training. We have our own placement wing completely dedicated for recruiting candidates all over the world. We provide free internship for our students after completing the course and we have our own projects going on all over india.



**CONTACT US
FOR MORE DETAILS**



+91 79029 78349



mttcinternationalpvtltd



www.mttcmep.com



mttcmepekochi@gmail.com



YouTube

SCAN QR CODE
FOR OUR
YOUTUBE CHANNEL



MTTC INTERNSHIP AND SITE VISITS

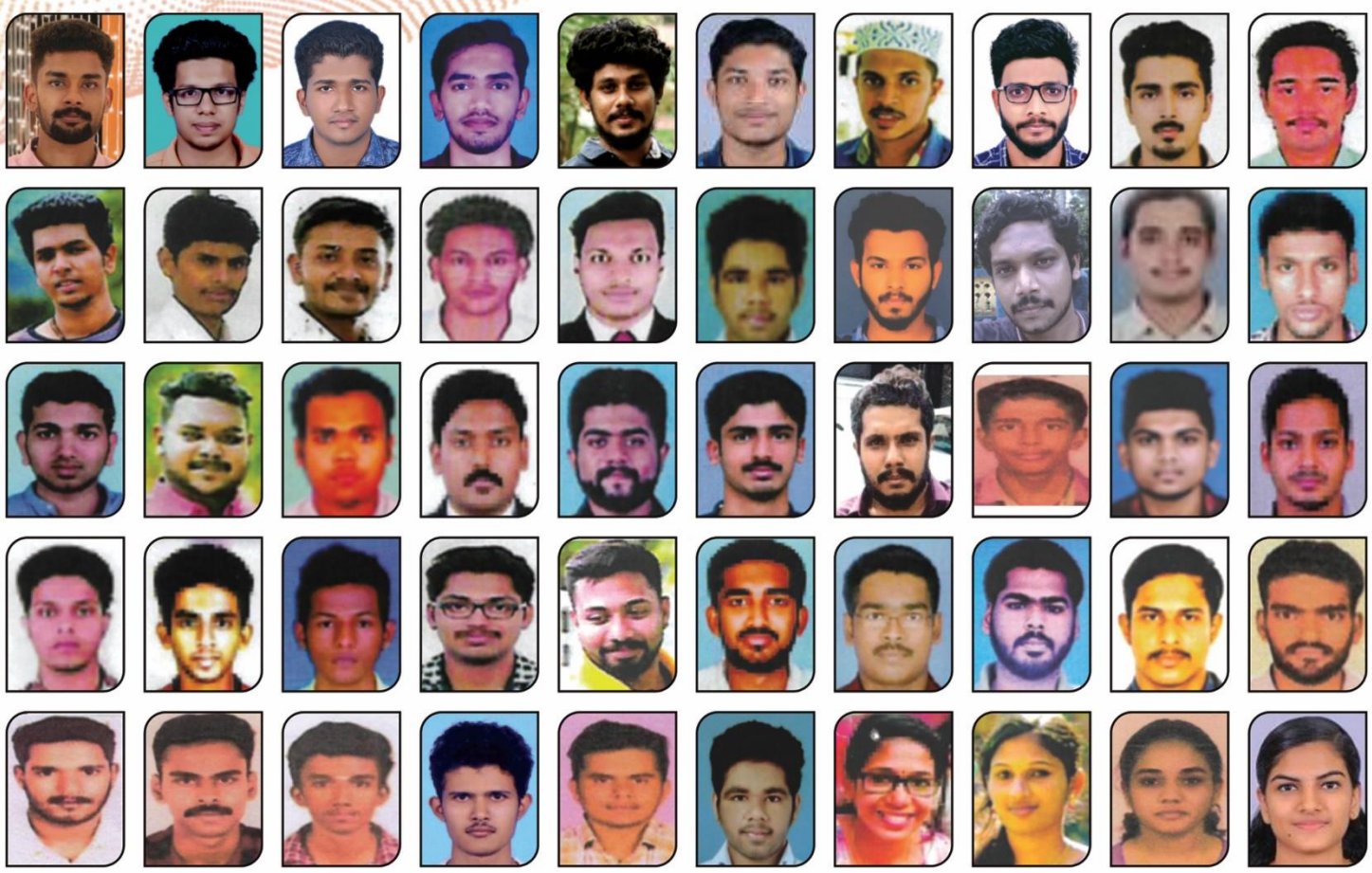




MTTC PLACEMENT CELLS

WE HAVE PLACEMENT WINGS
NOT ONLY FOR OUR STUDENTS
BUT ALSO FOR OUTSIDERS

RECENT PLACEMENT LIST





QA/QC

QUALITY ASSURANCE AND QUALITY CONTROL

QA/QC is the combination of Quality Assurance is the process or set of process used to measure and assure the quality of a product and Quality Control is the process of ensuring production service meet consumer expectations. Quality Assurance is process oriented and focus on defect prevention while Quality Control is product oriented and focuses on defect identification.



MODULES

- ◆ QA / QC MANUAL
- ◆ PROJECT IMPLEMENTATION ARRANGEMENTS
- ◆ RESPONSIBILITIES OF QA/QC ENGINEER
- ◆ DOCUMENT CONTROL PROCEDURES
- ◆ CONSTRUCTION QUALITY CONTROL
- ◆ MATERIAL SELECTION AND SAMPLING
- ◆ QUALITY DOCUMENT & REPORT PREPARATION
- ◆ CONSTRUCTION SITE SAFETY
- ◆ PRACTICAL CIVIL ENGINEERING
- ◆ LAB TESTS
- ◆ SITE VISIT



TABLE OF CONTENT



TEST ON CEMENT

SOUNDNESS TEST
CONSISTENCY TEST
INITIAL AND FINAL SETTING TIME
HEAT OF HYDRATION TEST

TEST ON AGGREGATE

SIEVE ANALYSIS
AGG IMPACT VALUE
AGG CRUSHING VALUE
AGG ABRASION VALUE

TEST ON FRESH CONCRETE

AIR CONTENT BY PRESSURE AIR METHOD
WORKABILITY TEST
VEE-BEE
COMPACTION FACTOR
SLUMP TEST

TEST ON HARDENED CONCRETE

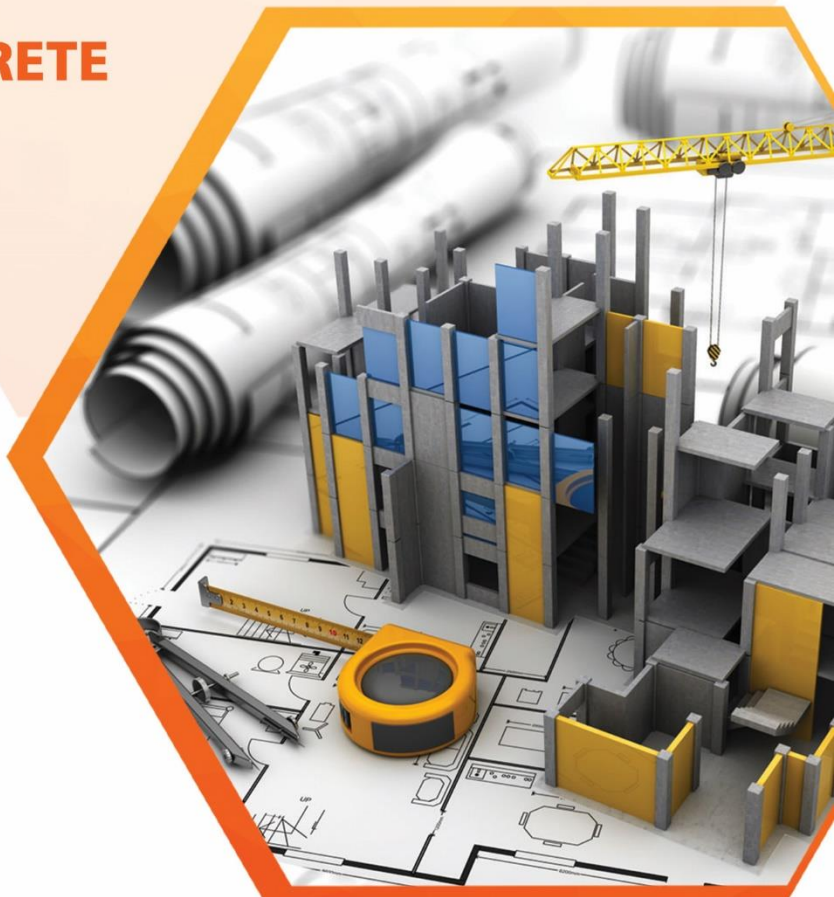
COMPRESSIVE STRENGTH TEST
TENSILE STRENGTH TEST

TEST ON SOIL

WATER CONTENT TEST
LIQUID LIMIT
PLASTIC LIMIT
SPECIFIC GRAVITY TEST
CORE CUTTER METHOD
SAND REPLACEMENT METHOD

TEST ON BITUMEN

SOFTENING POINT
DUCTILITY
PENETRATION
MARSHALL STABILITY TEST



NDT NON-DESTRUCTIVE TESTING

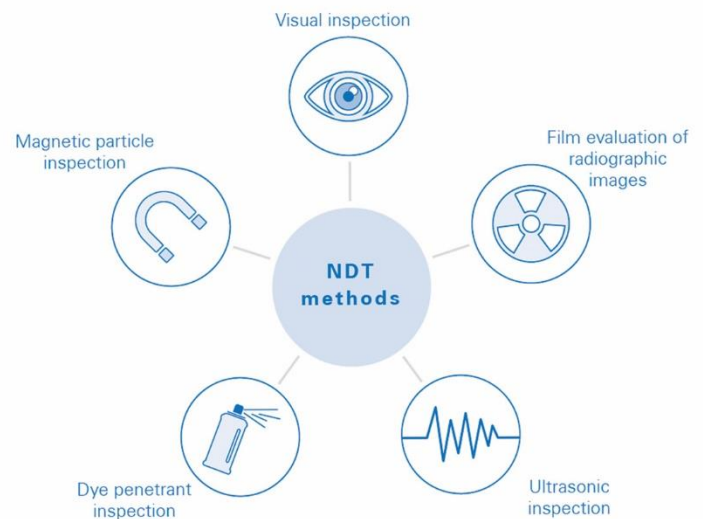


The current trend in the development of non-destructive testing of materials in civil engineering is mainly concerned with the detection of flaws and defects in concrete elements and structures, and acoustic methods predominate in this field.

MODULES

NDT TEST IN CIVIL

- ◆ SURFACE HARDNESS METHOD - REBOUND HAMMER TEST
- ◆ PENETRATION RESISTANCE TEST
- ◆ PULL OUT TEST
- ◆ PULL OFF TEST
- ◆ ULTRASONIC PULSE VELOCITY TEST
- ◆ TEST FOR CARBONATION OF CONCRETE



QS QUANTITY SURVEYOR

In a project, a quantity surveyor works out and arrives with the quantities of each work items from the scope of work/ construction drawings. He is not limited to this work. He holds several other responsibilities too

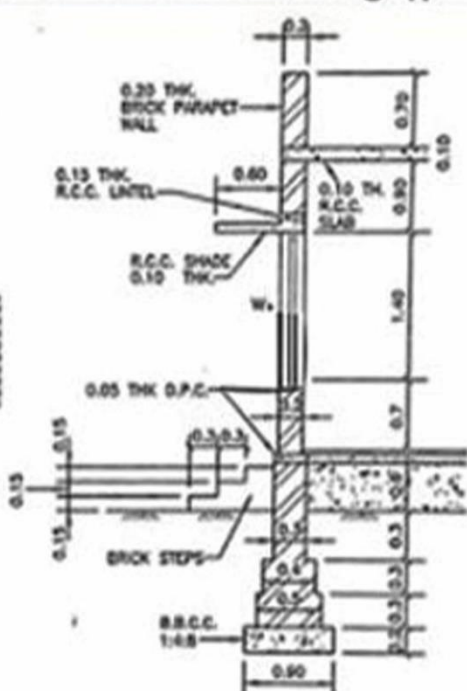
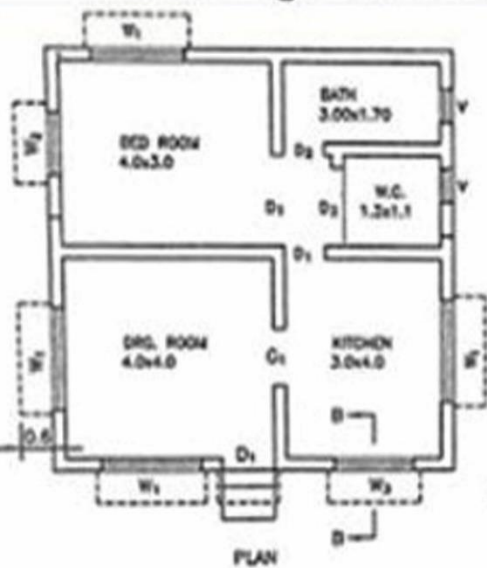


MODULES

- ◆ QUANTITY SURVEYING
- ◆ BAR BENDING SCHEDULE
- ◆ RATE ANALYSIS
- ◆ ESTIMATION OF BUILDINGS
- ◆ ESTIMATION OF ROADS
- ◆ ESTIMATION OF BRIDGES
- ◆ ESTIMATION OF RCC ITEMS
- ◆ ESTIMATION OF MISCELLANEOUS ITEMS
- ◆ PROJECT MANAGEMENT



Building Estimation and Costing || Estimation and Costing



DOOR-WINDOW SCHEDULE
 D₁ = 1.10x2.10
 D₂ = 0.90x2.10
 C₁ = 1.20x2.10
 W₁ = 1.80x1.40
 W₂ = 1.20x1.40
 W₃ = 1.50x1.40
 V = 0.60x0.60

NOTES:-
 ALL DIMENSIONS ARE IN METER
 NOT TO SCALE

of Long wall - Short Method							
S.No	Particulars of Item	Qty	L	B	H	Q	Explanation
1	Earth Work excavation						
	of Length	2	6.2	0.9	1.4	11.284	1-6.2+0-0+0.2
	of Short wall	2	3.4	0.9	1.4	8.168	1-3.4+0-0+0.2
							Total 19.452 m ³
2	C.C. (1:1.5) for foundation						
	of Length	2	6.2	0.9	0.3	3.348	
	of Short wall	2	3.4	0.9	0.3	1.816	
							Total 5.164 m ³
3	R.R. Masonry in CM (1:4) for						
	of Length	2	5.9	0.9	2.1	2.14	1-5.9+0.3+0.9
	of Short wall	2	3.1	0.9	2.1	2.22	1-3.1+0.3+0.9
							Total 4.36 m ³
	Total R.R. Masonry for foundation and Base						4.36+5.164 = 9.524 m ³
4	Brick masonry with CM (1:4) for superstructure						
	of Length	2	3.4	0.3	0.9	0.99	1-3.4+0.3+0.9
	of Short wall	2	4.6	0.3	0.9	1.20	1-4.6+0.3+0.9
	of exposed						1.40
							1.20
							Total 2.19 m ³

INTERIOR DESIGNING



Interior design helps to uplift our spirits and also helps to effectively optimize the space in our home making the best use of the available space. Interior design plays a very important role in our life today, making our lifestyle more modern and stylish

SOFTWARES

AUTOCAD 2D/3D

REVIT

3DS MAX

V-RAY





MODULE 1

COLOUR THEORY AND COLOUR SCHEMES

DRAFTING FOR INTERIOR DESIGNERS- THEORY + PRACTICAL

MODULE 2

INTERIOR SPACE COMPONENTS AND FURNISHING

WALL PARTITION

OPENINGS –DOORS & WINDOWS

STAIR TYPES

FURNITURE STANDARDS

CEILINGS , FALSE CEILINGS



MODULE 3

INTERIOR SPACE PLANNING THEORY

PLANNING WITH RESPECT TO PHYSICAL,
SOCIAL & PSYCHOLOGICAL NEEDS OF CLIENTS.

DESIGN PROCESS

DESIGN PERSENTATION

MODULE 4

BUILDING MEO SERVICES THEORY

LIGHTING & LIGHTING FIXTURES

PLUMBING BATHROOM & KITCHEN FIXTURES

HVAC – NATURAL HEATING , AIR CONDITIONING , VENTILATION

INTRODUCTION TO AUTOCAD THEORY & PRACTICAL

BUILDING MATERIALS AND CONSTRUCTION

ESTIMATION AND SPECIFICATION OF INTERIOR PROJECTS

OFFICE DESIGN THEORY

RETAIL DESIGN THEORY

MODULE 5

INTRODUCTION TO AUTOCAD

BUILDING MATERIALS AND CONSTRUCTION

ESTIMATION AND SPECIFICATION OF INTERIOR PROJECTS

OFFICE DESIGN THEORY

RETAIL DESIGN THEORY



CONTACT US FOR MORE DETAILS



+91 79029 78349



mttcinternationalpvtltd

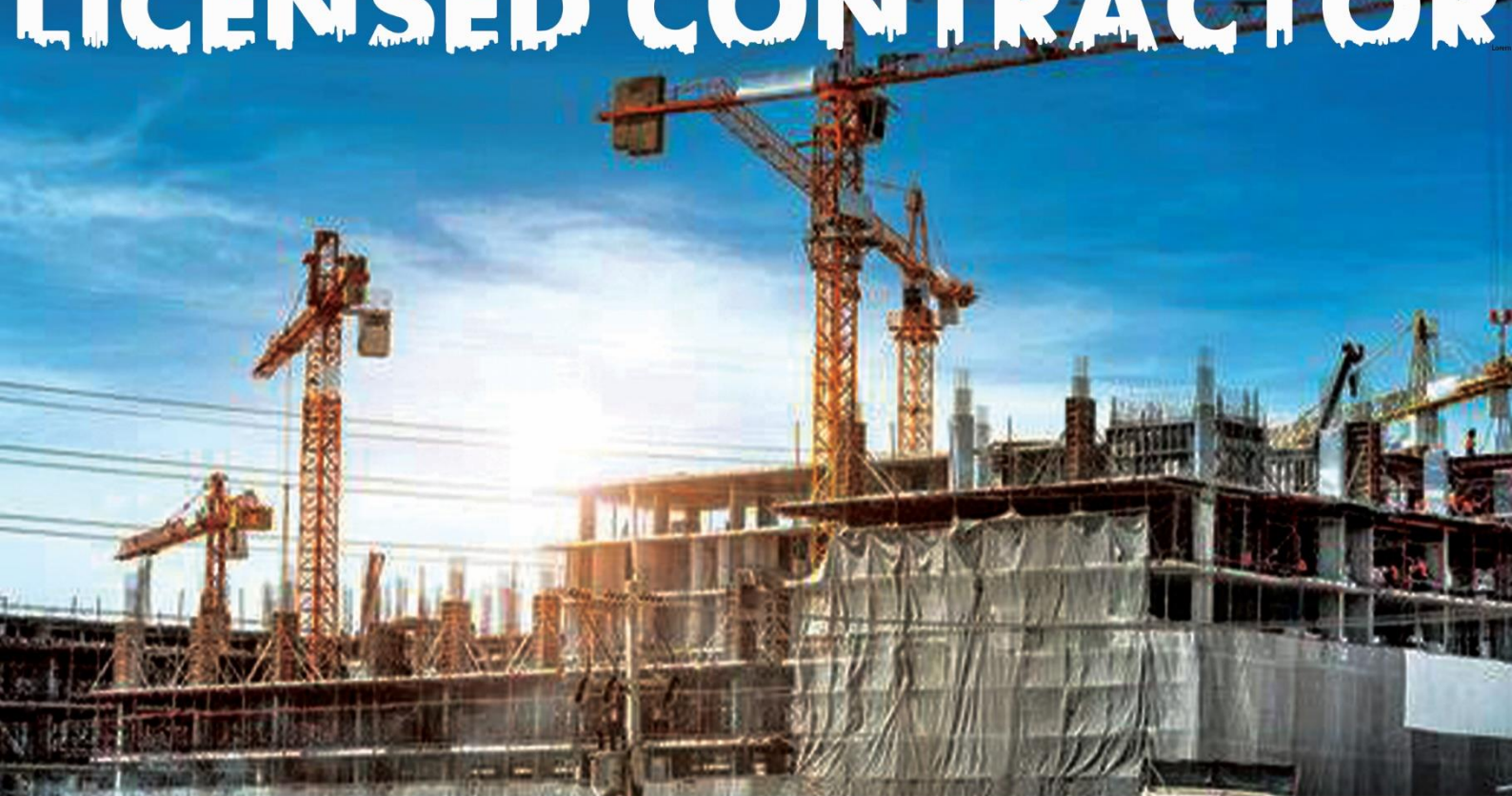


www.mttcmep.com



mttcmepekochi@gmail.com

LEARN FROM LICENSED CONTRACTOR



Mather Square, First Floor,
Door No.41/2526 B14,
opp, North Railway Station,
Kochi, Kerala